

INTELLIMASTER

VARIABLE SPEED PRESSURE PUMP

The perfect environmentally friendly pump that utilises advanced variable speed technology.



KEY FEATURES

- Stainless steel horizontal multistage - single phase pump with variable speed drive
- 304 stainless steel wet end
- Large LCD display
- Adjustable pressure set point
- 16 bar transducer
- Pressure gauge
- Stainless steel five-way tee with inbuilt non-return valve



Dual Booster Setup

INTELLIMASTER

VARIABLE SPEED PRESSURE PUMPS

Horizontal multistage, surface-mounted pumps with closed impellers for pumping debris-free water, integrated with an enclosed fan-cooled motor with advanced variable speed technology to provide optimum efficiency.

APPLICATIONS

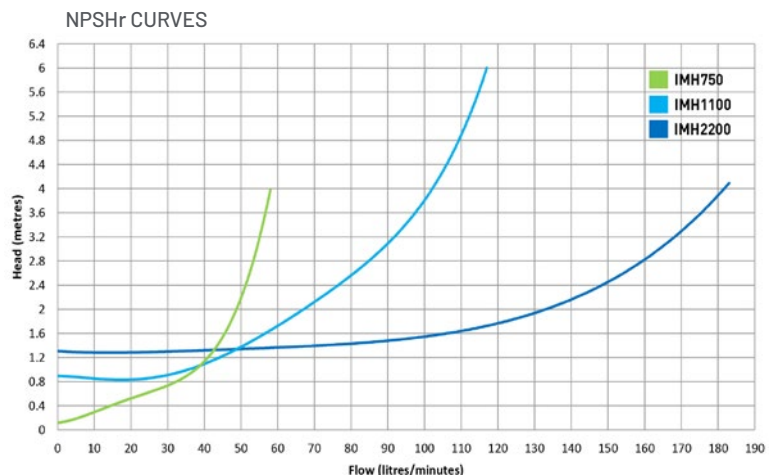
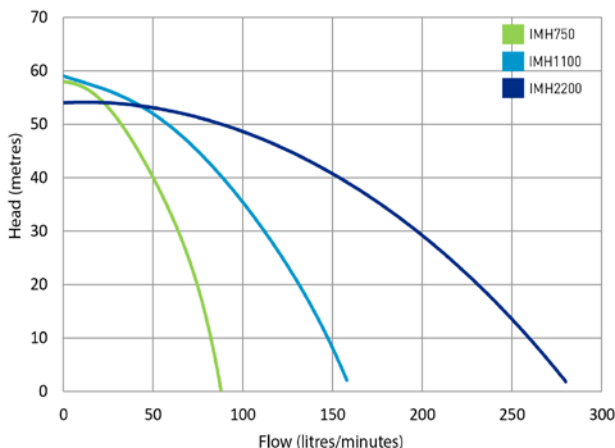
- Domestic pressure system.
- Pressure boosting.
- Irrigation and garden water supply.
- Water transfer.



COMPONENT	MATERIAL
Pump body casing	304 Stainless Steel
Check valve (5 way tee)	AISI304
Bushing	304 Stainless Steel
Impeller	304 Stainless Steel
Diffuser	304 Stainless Steel
Seal rotating face	M106K Impregnated furan resin
Base	AISI1015
Motor shaft	304 Stainless Steel

PERFORMANCE

MODEL	DELIVERY HEAD	10	15	20	25	30	35	40	45	50	55	60
IMH750	Capacity [litres per minute]	80	76	72	66	61	55	48	42	32	20	-
IMH1100	Capacity [litres per minute]	148	140	132	122	113	102	90	72	60	31	-
IMH2200	Capacity [litres per minute]	258	240	230	220	202	180	165	140	95	-	-





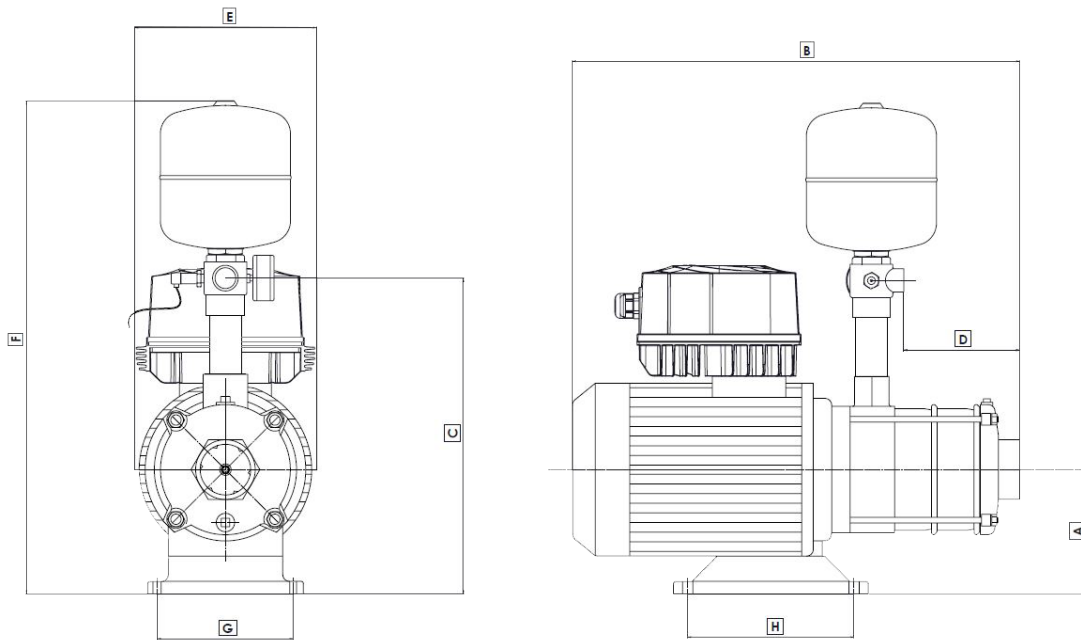
LCD DISPLAY

- Power frequency: 50Hz (+/-2%)
- Storing temperature: -30 to 70°C
- Min amb temperature of rated current: -10°C
- Max amb temperature of rated current = 40°C
- Grade of protection: IP55
- Class = C1

ELECTRICAL DATA

TYPE	VOLTAGE ±10%	FREQUENCY Hz ±2%	MOTOR RATING kW		NOMINAL RPM	FULL CURRENT	MOTOR PROTECTION	INSULATION CLASS	IP RATING
			P1	P2					
IMH750	220-240 1Ph	50	0.969	0.75	2890	7.5A	Inbuilt	F	IP55
IMH1100	220-240 1Ph	50	1.382	1.1	2890	9.8A	Inbuilt	F	IP55
IMH2200	220-240 1Ph	50	2.644	2.2	2890	14.8A	Inbuilt	F	IP55

DIMENSIONS



MODEL	A	B	C	D	E	F	G	H
IMH750	110mm	422mm	280mm	110mm	200mm	575mm	108mm	138mm
IMH1100	108mm	482mm	285mm	168mm	180mm	582mm	108mm	138mm
IMH2200	118mm	520mm	270mm	155mm	198mm	564mm	108mm	138mm

PART NO	WEIGHT APPROX.	PACKED L X W X H (mm)	PACKED WEIGHT	PUMP INLET	PUMP OUTLET	NO. OF STAGES
IMH750K	19 kg	520 x 320 x 400	20.5 kg	1" BSP (Female)	1" BSP (Female)	6
IMH1100K	22.3 kg	520 x 320 x 400	23.8kg	1 1/4" BSP (Female)	1" BSP (Female)	6
IMH2200K	28 kg	520 x 320 x 400	30 kg	1 1/2" BSP (Female)	1 1/4" BSP (Female)	5

INTELLIMASTER DUAL BOOSTER

Dual pump setup that utilises advanced variable speed technology.

FEATURES AND BENEFITS

- Experience seamless installation with our all-in-one solution, designed for plug-and-play convenience
- 304 stainless steel manifolds and base to offer greater robustness and durability
- Variable speed capabilities for constant pressure application, along with dry running protection to safeguard your pump from potential damage
- With Cascade Control, the second pump seamlessly adjusts its motor speed according to demand, optimizing efficiency
- Alternating start-up functionality, promoting balanced wear and tear across pumps for extended longevity

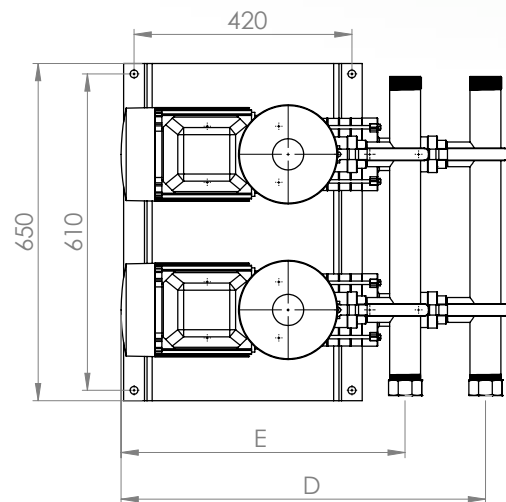
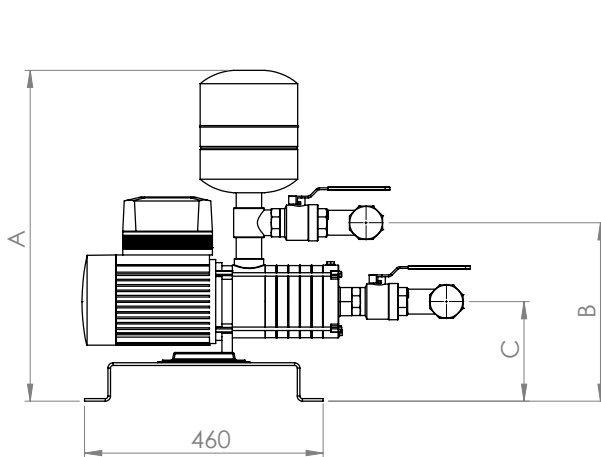
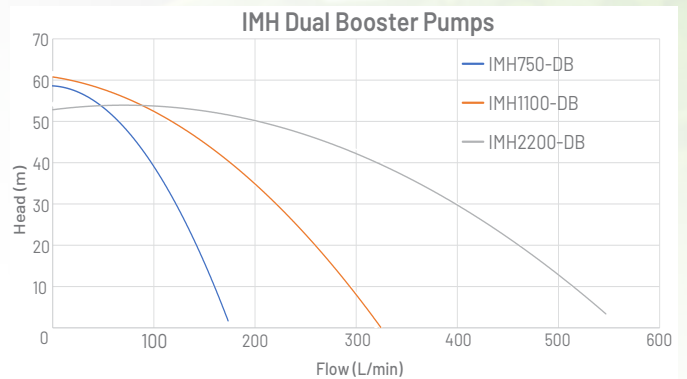
OPERATING CONDITIONS

Suitable for pumping clean non-aggressive liquids without solids or fibres in suspension.

Fluid	: Water
Max Water Temperature	: 40°C
Min Water Temperature	: 1°C
Max Ambient Temperature	: 40°C
Max Working Pressure	: 700kPa



PERFORMANCE



PART NUMBERS	A	B	C	D	E	Manifold (Inlet)	Manifold (Outlet)
IMH750-DB	665mm	350mm	175mm	630mm	535mm	1½"	1½"
IMH1100-DB	670mm	357mm	180mm	720mm	540mm	2"	1½"
IMH2200-DB	705mm	395mm	185mm	725mm	555mm	2"	2"



1-21 Monash Drive | Dandenong South, VIC 3175 | Australia | 1300 137 344 | pentair.com.au

Information contained here-in remains the property of Pentair Australia Holdings Pty Ltd under Australian copyright law. Content may not be reproduced or transmitted without our prior written permission.

Disclaimer: Pentair reserves the right to change product specifications and products details. Product images are for reference purposes only and may not represent the actual/current product.

©2024 Pentair. All rights reserved.